



## APPLICATION

SYNTHETIC RESINS - PAINT AND VARNISH /Solvent Based

2 K ACRYLIC RESIN

## IZELCRYL O 45X60 N 4.5 %OH

### STARTING PAINT FORMULATION

COMPONENT	AMOUNT %
IZELCRYL O 45X60 N	50
DISPERSION AGENT	0,5
ANTI COLLAPSE	0,3
CALCITE	35
CARBON BLACK	1,5
SOLVENT	12,7

\*In paint formulation, resin solid rate is between 30-35% and paint solid ratio is between 65-70%.

### PAINT AND VARNISH PROPERTIES

TEST	VARNISH	PAINT
Drying(minute, 20-23°C)	20	35
Hard Drying(hour, 20-23°C)	>24	>24
Pot life( hour, 20-23°C)	>24	>24
Gloss(60°, 20-23°C)	84	74
Pendulum Hardness(1-5 day/counts ,20-23°C)	36p-334p	22p-298p
*Yellowing Resistance(20-23°C)	1	-
*Cross Cut(GAL/AL/SHT)	1\1\1	1\1\1
*Impact Strength(5N/1000g)( GAL/AL/SH)	2\2\2	1\1\1
*Conical Bend Test(20-23°C)(GAL/AL/SHT)	1\1\1	1\1\1
**Abrasion Test(1000 cycle/500 gr)		

(\*)Marked areas are rated as 0 best and 5 worst.

(\*\*) Taber Abrasion Test performed according to the mass method

Galvanized(Gal),Sheet(SHT),Aluminum(AL)

TaberWear Index = ( F<sub>total</sub> x T ) / n F<sub>total</sub> = A<sub>first</sub> – B<sub>End</sub> n= cycle T = mass loss at an average of 1000 cycle



Figure1. Aluminum surface impact test

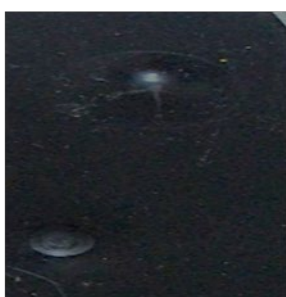


Figure 2. Galvanized surface impact test



Figure 3. Sheet metal impact tes

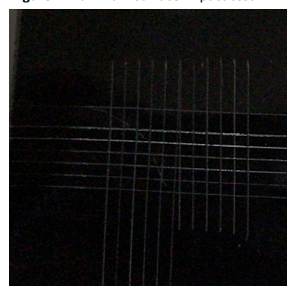


Figure 4. Aluminum surface adhesion test

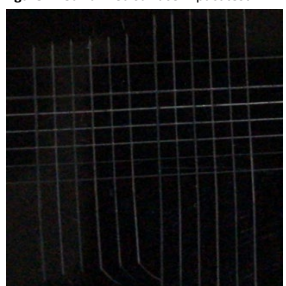


Figure 5. Galvanized surface adhesion test

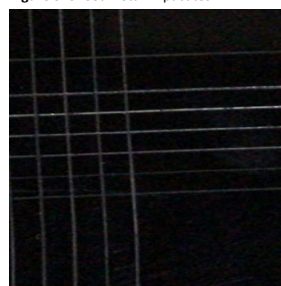


Figure 6. Sheet metal surface adhesion test

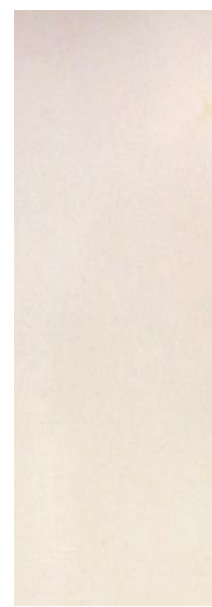


Figure 7. Yellowing resistance

**Note:** Experiments were carried out under Izel Kimya laboratory conditions aimed to give information about the product features. Results may vary according to the user and application condition