

### IZELCRYL 25X60

#### STARTING PAINT FORMULATION

COMPONENT	AMOUNT %
IZELCRYL 25X60	50
DISPERSION AGENT	0,5
ANTI COLLAPSE	0,3
CALCITE	35
CARBON BLACK	1,5
SOLVENT	12,7

\* In paint formulation, resin solid rate is between 30-35% and paint solid ratio is between 65-70%.

#### PAINT AND VARNISH PROPERTIES

TEST	VARNISH	PAINT
Drying(minute,20-23°C)	8	10
Hard Drying(hour, 20-23°C)	24	24
Gloss (60°, 20-23°C)	85	76
Pendulum Hardness (1-5 day/counts ,20-23°C)	202p - X	133p-X
*Yellowing Resistance (20-23°C)	4	-
*Cross Cut (GAL/AL/SHT)	4\5\4	4\5\4
*Impact Strength ( 5N/1000 gr)( GAL/AL/SHT)	5\5\4	4\4\3
*Conical Bend Test (20-23°C)(GAL/AL/SHT)	4\5\4	4\5\4
**Abrasion Test(1000 cycle/500 gr)	0,209	0,305

(\*) Marked areas are rated as 0 best and 5 worst.

(\*\*) Taber Abrasion Test performed according to the mass method

Galvanized(Gal), Sheet ( SHT), Aluminum(AL)

TaberWear Index =  $(F_{total} \times T) / n$   $F_{total} = A_{first} - B_{end}$   $n = \text{cycle}$   $T = \text{mass loss at an average of 1000 cycle}$

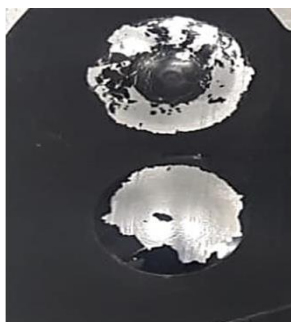


Figure1. Aluminum surface impact test

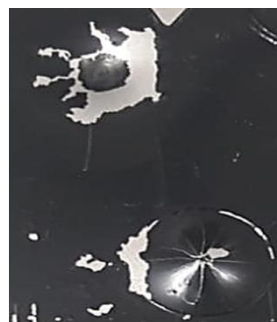


Figure2. Galvanized surface impact test

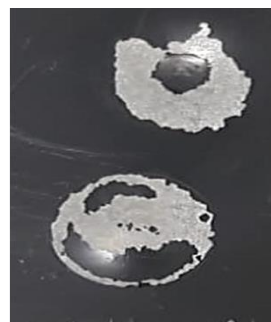


Figure3. Sheet metal surface impact test



Figure4. Aluminum surface adhesion test



Figure5. Galvanized surface adhesion test



Figure6. Sheet metal surface adhesion test



Figure 7. Yellowing resistance

**Note:** Experiments were carried out under Izel Kimya laboratory conditions aimed to give information about the product features. Results may vary according to the user and application condition