

IZELCRYL 24X60

STARTING PAINT FORMULATION

COMPONENT	AMOUNT %
IZELCRYL 24X60	50
DISPERSION AGENT	0,5
ANTI COLLAPSE	0,3
CALCITE	35
CARBON BLACK	1,5
SOLVENT	12,7

* In paint formulation, resin solid rate is between 30-35% and paint solid ratio is between 65-70%.

PAINT AND VARNISH PROPERTIES

TEST	VARNISH	PAINT
Drying(minute,20-23°C)	15	15
Hard Drying(hour, 20-23°C)	24	24
Gloss (60°, 20-23°C)	85	85
Pendulum Hardness (1-5 day/counts ,20-23°C)	45p - 133p	60p-101p
*Yellowing Resistance (20-23°C)	1	-
*Cross Cut (GAL/AL/SHT)	1\2\1	1\1\1
*Impact Strength (5N/1000 gr)(GAL/AL/SHT)	5\5\4	3\3\3
*Conical Bend Test (20-23°C)(GAL/AL/SHT)	1\1\1	1\1\1
**Abrasion Test(1000 cycle/500 gr)	0,161	0,145

(*)Marked areas are rated as 0 best and 5 worst.

(**) Taber Abrasion Test performed according to the mass method

Galvanized(Gal),Sheet(SHT),Aluminum(AL)

TaberWear Index = (F_{total} x T) / n F_{total} = A_{first} - B_{End} n= cycle T = mass loss at an average of 1000 cycle

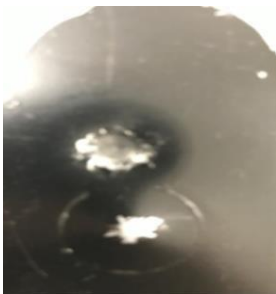


Figure1. Aluminum surface impact test

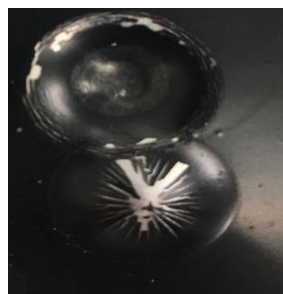


Figure 2. Galvanized surface impact test



Figure 3. Sheet metal impact test

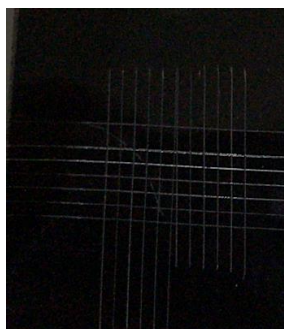


Figure 4. Aluminum surface adhesion test



Figure 5. Galvanized surface adhesion test

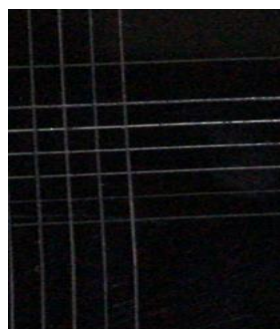


Figure 6. Sheet metal surface adhesion test



Figure 7. Yellowing resistance

Note: Experiments were carried out under Izel Kimya laboratory conditions aimed to give information about the product features. Results may vary according to the user and application condition